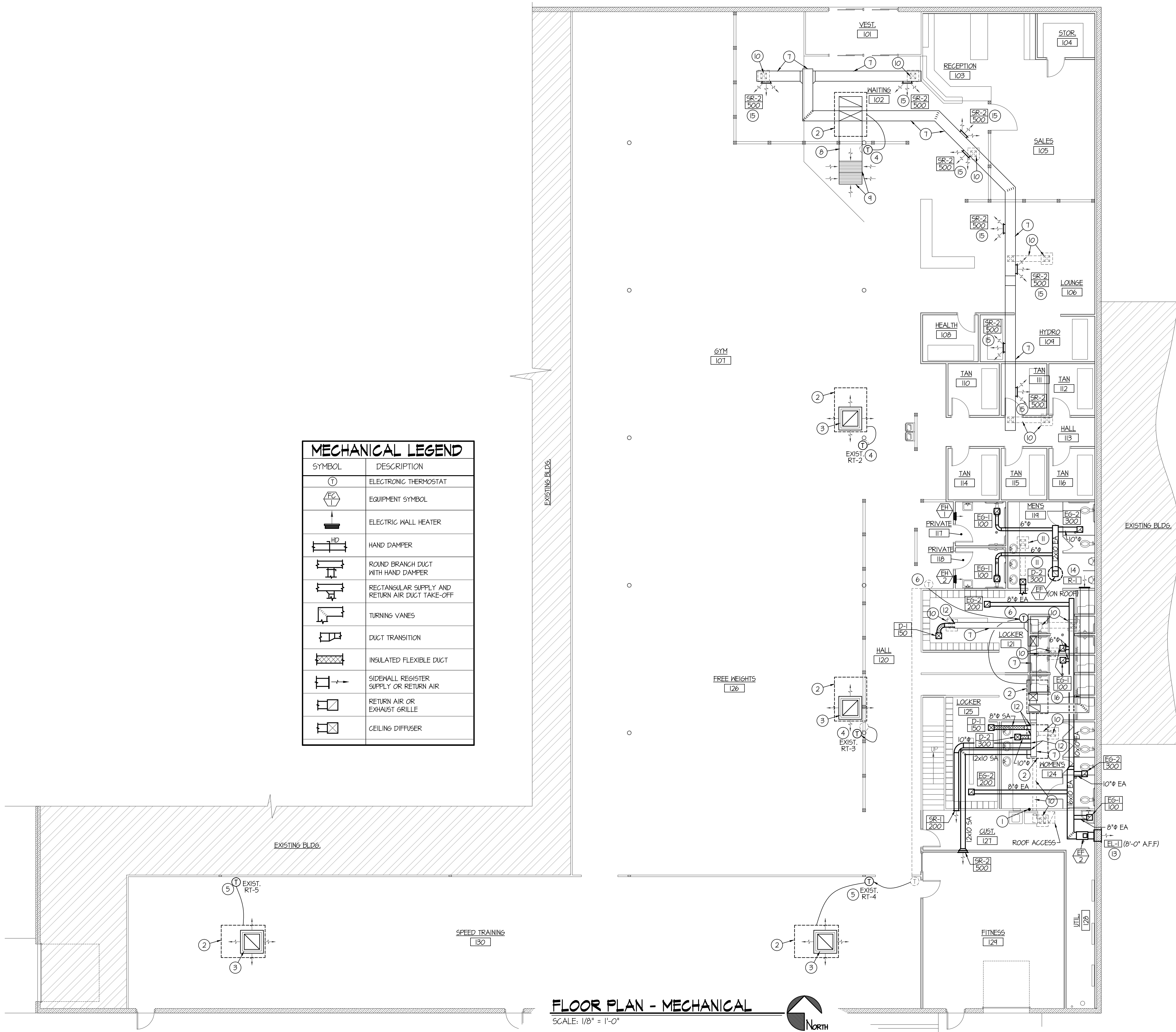


F:\18061\WORLD GYM\18061 MI.Ldg Oct 03, 2018 - 10:20am



MECHANICAL LEGEND	
SYMBOL	DESCRIPTION
(T)	ELECTRONIC THERMOSTAT
(FC)	EQUIPMENT SYMBOL
(EWH)	ELECTRIC WALL HEATER
(HD)	HAND DAMPER
(RBD)	ROUND BRANCH DUCT WITH HAND DAMPER
(RSD)	RECTANGULAR SUPPLY AND RETURN AIR DUCT TAKE-OFF
(TV)	TURNING VANES
(DT)	DUCT TRANSITION
(IFD)	INSULATED FLEXIBLE DUCT
(SR)	SIDEWALL REGISTER SUPPLY OR RETURN AIR
(RA/EG)	RETURN AIR OR EXHAUST GRILLE
(CD)	CEILING DIFFUSER

FLOOR PLAN - MECHANICAL
SCALE: 1/8" = 1'-0"



PLAN NOTES:

- 1 RISE 4" DRYER VENT UP IN WALL TO ROOF CAP ABOVE. SEAL ROOF PENETRATION WEATHERTIGHT. SEE DETAIL ON SHEET M2.0
- 2 EXISTING ROOFTOP UNIT TO REMAIN. PROTECT DURING CONSTRUCTION.
- 3 EXISTING CONCENTRIC SUPPLY / RETURN AIR GRILLE ASSEMBLY TO REMAIN. REMOVE AND CLEAN GRILLES AND RE-INSTALL.
- 4 RELOCATE EXISTING THERMOSTAT ON COLUMN DOWN TO 50" A.F.F. FIELD VERIFY FINAL LOCATION ON COLUMN WITH NEW WALLS TO AVOID CONFLICTS.
- 5 RELOCATE EXISTING THERMOSTAT & SD TEST SWITCH ON WALL AS REQUIRED FOR NEW WALL FINISHES.
- 6 RELOCATE EXISTING THERMOSTAT FOR NEW LOCKER ROOMS TO MEN'S ROOM WALL AS SHOWN. EXTEND WIRING AND CONDUIT AS REQUIRED.
- 7 EXISTING SUPPLY AIR DUCTWORK TO REMAIN.
- 8 EXISTING RETURN AIR DUCTWORK TO REMAIN.
- 9 EXISTING RETURN AIR GRILLES TO REMAIN.
- 10 REMOVE EXISTING SUPPLY AIR DUCT AND CEILING DIFFUSER BACK TO MAIN TRUNK DUCT. SEAL OPENING IN DUCT WITH SHEET METAL AIR TIGHT.
- 11 REMOVE EXISTING CEILING DIFFUSER AND SUPPLY DUCT AS SHOWN. DROP NEW 10x10 SUPPLY DUCT DOWN TO NEW CEILING DIFFUSER IN MEN'S RESTROOM CEILING AS SHOWN. BALANCE TO 300 CFM.
- 12 CONNECT NEW SUPPLY AIR DUCT TO EXISTING SUPPLY AIR DUCT. PROVIDE TRANSITION AS REQUIRED.
- 13 INSTALL NEW EXHAUST LOUVER EL-1 IN EXISTING BLOCK WALL. SEE ARCH. PLANS FOR CUTTING AND PATCHING OF WALL.
- 14 CUT EXISTING RETURN AIR DUCT OFF FLUSH WITH EXISTING WALL AND INSTALL NEW RETURN AIR GRILLE ON END OF DUCT NEAR ROOF STRUCTURE ABOVE.
- 15 INSTALL NEW SUPPLY REGISTER IN SIDEWALL OF EXISTING SUPPLY DUCT AND BALANCE TO CFM SHOWN.
- 16 EXISTING RETURN AIR DUCT ABOVE CEILING OF UPPER LEVEL NEAR ROOF STRUCTURE TO REMAIN.

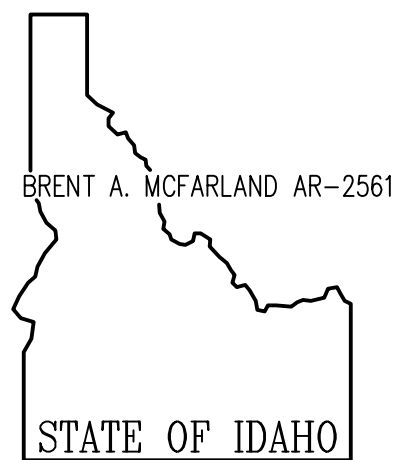
GENERAL NOTES:

- A- THE CONTRACTOR SHALL CHECK AND VERIFY ALL DIMENSIONS AND CONNECTIONS ON THE JOB SITE. ALL WORK SHALL BE EXECUTED FROM MEASUREMENTS TAKEN AT THE SITE.
- B- THE MECHANICAL CONTRACTOR SHALL BE RESPONSIBLE TO INSURE PROPER CODE CLEARANCES FOR ELECTRICAL AND MECHANICAL ACCESS WHEN INSTALLING ANY EQUIPMENT SUPPLIED BY THE MECHANICAL CONTRACTOR.
- C- IT IS CRITICAL THAT THIS CONTRACTOR COORDINATE EQUIPMENT LOCATIONS WITH PIPING, DUCTWORK, ELECTRICAL CONDUIT AND BUILDING STRUCTURE TO INSURE CODE COMPLIANCE.
- D- CEILING DIFFUSERS ARE SHOWN IN APPROXIMATE LOCATIONS. REFER TO LIGHTING PLANS AND REFLECTED CEILING PLAN FOR EXACT LOCATIONS.
- E- DUCT DIMENSIONS CALLED OUT ON DRAWINGS ARE INSIDE FREE AREA DIMENSIONS. ACOUSTICAL DUCT LINER ARE TO BE ADDED TO OVERALL MEASUREMENTS.
- F- ALL DUCTWORK AND PIPING WHICH PASSES THRU FIRE RATED WALLS TO BE FIRE STOPPED WITH APPROVED FOAM OR SEALANT. REFER TO SPECIFICATIONS FOR APPROVED MANUFACTURES.

ORIGINAL DRAWING SIGNED BY: DWAYNE G. SUDNEEKS
DATE ORIGINAL SIGNED: Oct 03, 2018
ORIGINAL ON FILE AT ENGINEERED SYSTEMS ASSOCIATES
1355 EAST CENTER, POCATELLO, IDAHO 83201

PROFESSIONAL ENGINEER
REGISTERED
5762
STATE OF IDAHO
DWAYNE G. SUDNEEKS

Engineered Systems Associates
1355 EAST CENTER
POCATELLO, IDAHO 83201
PHONE: (208) 233-0501
FAX: (208) 233-0529
EMAIL: esa@engsystems.com
ESA JOB NUMBER: 18061



BRENT A. MCFARLAND AR-2561

JRW & ASSOCIATES

1152 BOND AVENUE - Suite A - REBURG, IDAHO 83340
WWW.JRW.COM VOICE (208) 359-2299 FAX (208) 359-2271

CONSULTANTS:

MECHANICAL ENGINEERING
ENGINEERED SYSTEMS ASSOC.
1355 East Center
Pocatello, Idaho 83201
(208) 233-0501
Fax (801) 233-0529

ELECTRICAL ENGINEERING
PAYNE ENGINEERING INC.
1823 E. Center St.
Pocatello, Idaho 83201
(208) 232-4439
Fax (208) 232-1435

PROJECT: WORLD GYM REMODEL

IDAHO FALLS, IDAHO

DRAWING TITLE: MECHANICAL FLOOR PLAN

REVISION:		
#	DATE	COMMENT

DRAWN BY: SR JOB NO: 756

CHECKED BY: DCS DATE: OCT, '18

PLOT DATE: 09-26-18

DRAWING NO. MI.1

FILE: 18061 MI.Ldg

OF -